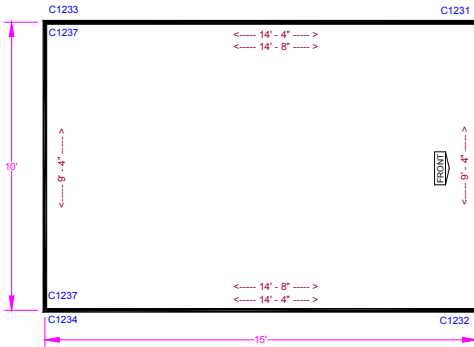
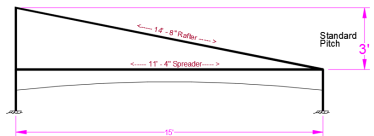
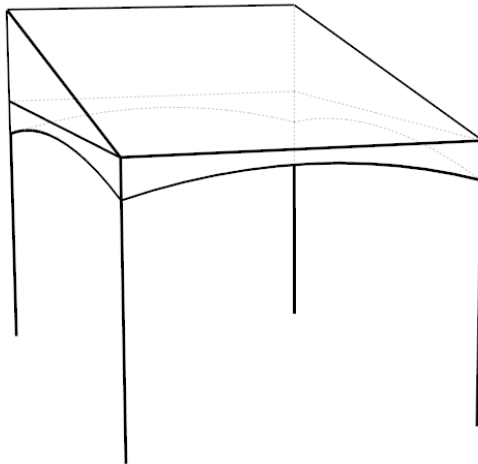


Central Tent * Commercial Frame Tent * Central Tent * Quality Frame Tent * Central Tent * Commercial Frame Tent * Central Tent * Commercial Frame Tent * Central Tent * Quality Frame Tent * Central Tent * Commercial Frame Tent * Central Tent * Quality Frame Tent * Central Tent * Commercial Frame Tent



| 15x10 Gable Extension Frame Tent | | | |
|----------------------------------|--------------------------------------|------------|---------|
| Qty | FITTINGS | | Part # |
| 1 | Corner - Front Right | | C1231 |
| 1 | Corner - Front Left | | C1232 |
| 1 | Corner - Back Right | | C1233 |
| 1 | Corner - Back Left | | C1234 |
| 2 | Mid Back Corner | | C1237 |
| 22 | Pin - Wire Loop | | A02 |
| 4 | Base Plates - Tension | | C1011-Q |
| 4 | Tension Ropes | | ROPE003 |
| Qty | Size | Poles | Color |
| 2 | 14'-8" | Spreader | |
| 2 | 14'-4" | Perimeter | |
| 3 | 9'-4" | Perimeter | |
| 2 | 10'-8" | Back Legs | |
| 2 | 7'-8" | Front Legs | Black |
| Qty | Accessories | | |
| 4 | Corner Leg Braces | | |
| 0 | Tee Joint Leg Braces | | |
| 8 | Ratchet Ropes and Stakes (4 Minimum) | | |
| 50 | Feet of Perimeter Sidewall | | |
| Options | | | |
| Colors (Solid or stripes) | | | |
| Clear 20 Ga. | | | |
| | | | |
| Notes | | | |



Central Tent * Commercial Frame Tent * Central Tent * Quality Frame Tent * Central Tent * Commercial Frame Tent * Central Tent * Quality Frame Tent * Central Tent * Commercial Frame Tent * Central Tent * Quality Frame Tent * Central Tent * Commercial Frame Tent